

No images? [Click here](#)



OUR NEXT GERNERAL TRAINING

DATE: November 4th

TIME: 6:00PM

**LOCATION: YOUR ONLINE LEARNING
SPACE**

**(CHOOSE A QUIET PLACE WHERE YOU WILL
NOT BE DISTRACTED)**

TOPIC: Marketing





**OUR NEXT
GENERAL BUSINESS
MEETING**

DATE: December 9th

TIME: 6:30PM

THIS MEETING IS FOR

ALL MEMBERS .

EVERYONE IS EXPECTED TO ATTEND.



OUR NEXT BOARD MEETING

DATE: November 11th

TIME: 7:30PM

RSVP TO RHONDA WATSON.

EVERYONE IS WELCOME.

[Visit Us on the Web](#)

[Board of Directors](#)

[Committee Chairpersons](#)

[Provider Resources](#)

Click on the button above to get information on our Board & Committee Members.



From Rhonda (President)

This is the month to celebrate being thankful. When I look at my life from 2020 to present, I can say I am thankful for making it to see another year. I am thankful for my health and strength. I am thankful for all the support I have received from family, friends and members. Being the president of HCFCCA has had it's challenges but all of them have helped me grow. I am thankful for all of these experiences because I have learned a lot about myself as well as people. Classes and trainings could never give me the knowledge I received from these hands on experiences. I would like to thank all of you for supporting HCFCCA. I am thankful for everyone who stepped up to support this organization's growth. I want our board and chairperson to know that I am so grateful they stepped up to help not only to guide me but also the association. I am thankful for all of the organizations that helped us this year.

At this point, I hope everyone who applied for the grant has received it. Please use the form that was supplied to guide you on your spending. I would recommend that you to send in estimated taxes. Before you know it 2022 will be here. This is the time of the year when you should be thinking about how to improve your business. Do you have the proper insurance? What would make your business pop? What classes do you need to get to the next level of Credentialing and Excels? How you can volunteer with the association? How do you convert your degree from your country to the US.? Do you need to change your childcare fees? Do you need to update your handbook and contract? Think about going to school while MSDE is paying 100% of your tuition and fees. If you need help in the areas of credentialing, Excels and accreditation, please contact HCFCCA mentor Therese Mason at laurelbutterflychildcare@gmail.com .

Overall, Thanks for taking time to care!

IMPORTANT INFORMATION

Howard County Health Department: 410-313-6284

Carroll County Health Department: 410-876-4900

Email your licensing specialist your answer from the health department or call 410-750-8771



From Angela (VP of Education)

If getting your business noticed is a priority for you come join us on November 9th 2021 for a Marketing training.



(Treasurer)

HCFCCA IS IN URGENT NEED OF A TREASURER. IF YOU ARE INTERESTED IN VOLUNTEERING FOR THE POSITION, PLEASE CONTACT RHONDA WATSON hfccabusiness@gmail.com



From Uyen (Secretary/Fundraising)

Halloween has always been one of my favorite holidays. It is the day when kids can dress up and let themselves become certain characters. I think one of the amazing things of childhood is the ability to imagine and feel

confident when they are in different characters. I can see this event really encouraging children's socialization. Enclosed are a couple pictures from this years annual Halloween party held at my daycare. My kids enjoyed special treats like cupcakes and collected Halloween eggs. They really had fun doing art and dancing to Halloween themed music.



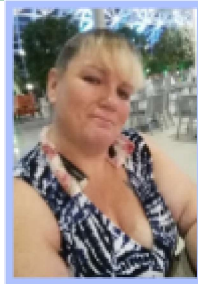
[CLICK THIS BUTTON TO FILL OUT AN APPLICATION ONLINE](#)

From Lisa (Vice President of Membership)

I want to thank everyone for adapting to our new system online. Please be patient with me as I adapt too. Please reach out to me if you need anything regarding your membership.

I am so excited to see providers reaching out to other providers. We got some new providers. We are growing so keep up the great work.

Please feel free to reach out to me.



**I AM IN
CHARGE OF
WHAT I FEEL
AND TODAY
I'M CHOOSING
HAPPINESS...**

From Melissa (Newsletter Editor)

Newsletter Deadlines

Due Date	Newsletter
-----------------	-------------------

Month

November 14th	December
December 12th	January 2022
January 16th	February
February 13th	March
March 13th	April
April 17th	May
May 15th	June
July 17th	August Summer 2022 (first newsletter of 22/23 Vol 43)

Please send your newsletter contributions to newsletterhcfcca@gmail.com. Any contributions to the newsletter are eligible for a PAU. **YOU must print out your article AFTER it is published in the newsletter.**



From Therese(Mentoring/Networking)

Joan Johnson and I plan on holding one support group each month to assist providers with NAFCC Accreditation and the Maryland Credential. Meetings will be virtual on the third Thursday of each month from 6:30 – 7:30 pm. Here is the link for the months ahead

<https://howardcountymd.webex.com/howardcountymd/j.php?MTID=mc0003bf5632c8cf1a135f7437af4ffd2>

Here is the meeting schedule

- 11/18/21 (Accreditation)

- 12/16/21 (Credential)
- 1/20/22 (Accreditation)
- 2/17/22 (Credential)
- 3/17/22 (Accreditation)
- 4/21/22 (Credential)
- 5/19/22 (Accreditation)

Please feel free to reach out if you have any questions or concerns

Therese Mason-443-850-3400

laurelbutterflychildcare@gmail.com

Or

Joan Johnson -410-313-1432

jmjohnson@howardcountymd.gov



All are welcome to join our women's walking group. We meet weekly either on a Saturday or Sunday 9am at local a walking path to socialize and get exercise together. Attend whenever it's convenient for you. Join our Facebook group or text me for more information.

https://www.facebook.com/groups/147690680847397/?ref=share_group_link

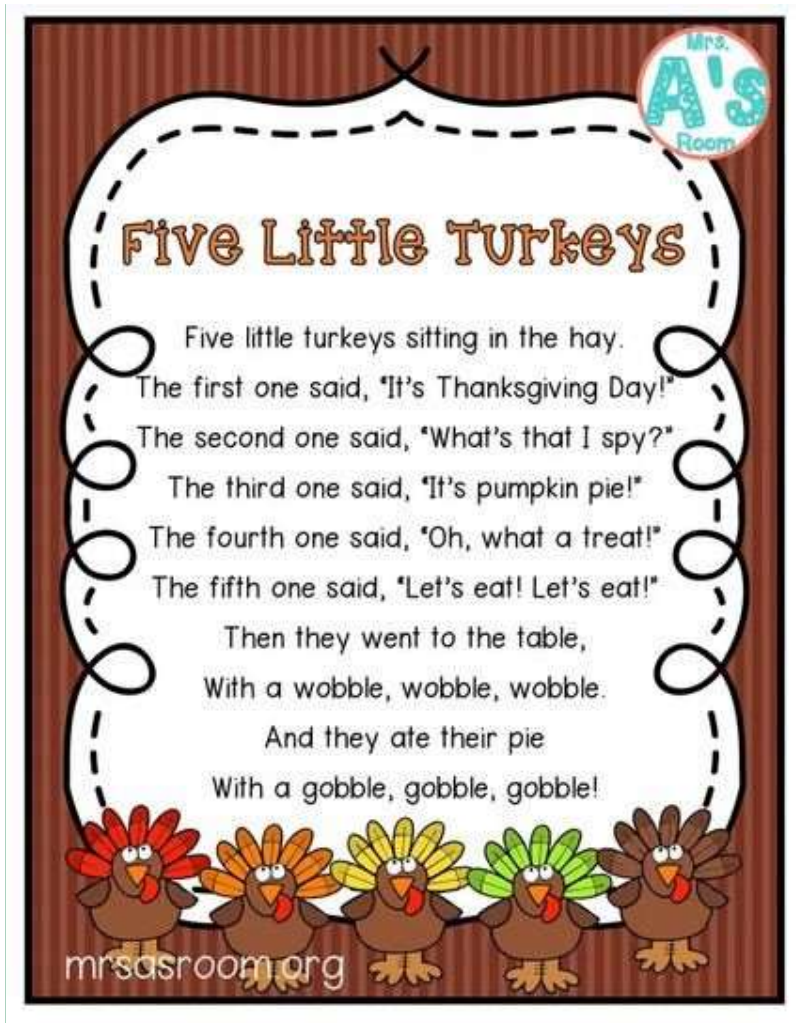


Application For Letter of Volunteerism

From Anita(Volunteer Coordinator)

This is a cute little poem that will help introduce ordinal numbers (first, second, ...) You can make up any hand gestures you want that suit each line. You could also use a flannel board and have 5 turkeys to put up as you recite it.

From: MRSASROOM.org



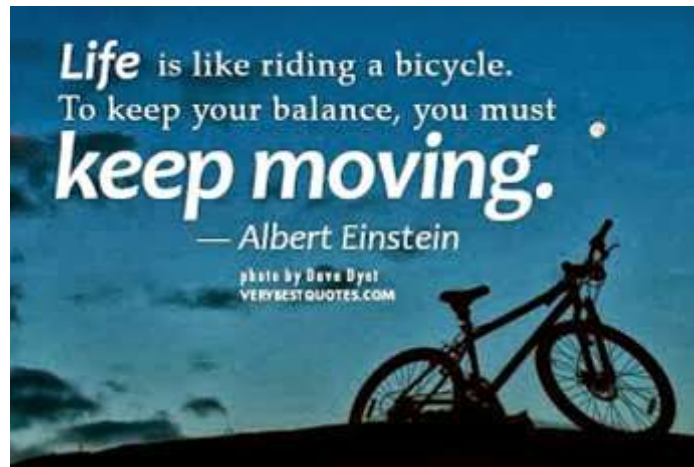
**From Nancy (Parent Message Board
Coordinator)**

If you have a parent inquiring about an opening at your child care home and you are unable to accommodate them, please offer to help them by taking their name, contact information (phone and/or email), their needs for care, and their location. Please email the information to me and I will in-turn forward it to the Association. Or you

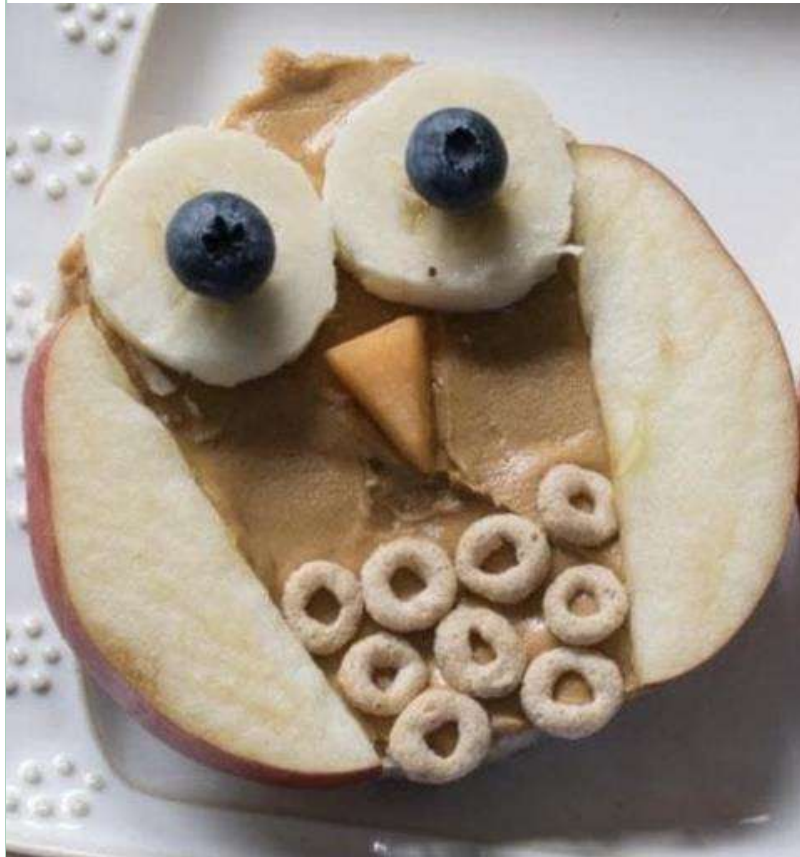
can certainly refer them to our Parent's Message Line at (301) 776-4841 or our website HCFCCA.com.



From Deena(Marketing and Public Relations)



From Thelma (MSFCCA Director)



From Claudia (Website Coordinator)

Owl Rice Cakes

To make these fun treats you are going to need some healthy snack options. Many of which you probably have on hand.

- [Rice Cakes](#)
- Peanut Butter (or butter spread alternative)
- Circle Oat Cereal
- Bananas
- blueberries
- apples
- Cantaloupe or peach (for beak)

The first step to these Owl Rice Cake Snacks

First spread peanut butter on top of the rice cake. Then top with two slices of banana for the eyes. Top the banana with blueberries.

Next cut a small piece of cantaloupe (you could use peach or nectarine for this too!) into a triangle and place it for the beak.

Add two apple slices for the wings, and finally, add a few Cheerios for the body.

Get Creative

You can even set up the ingredients for the kids and let them get creative and make their Owls. A fun afternoon project and snack!

Provide your child with fruit and healthy ingredients and let them play with their food. Let them create their own animal or snack creation to see what they come up with.



From Natacha (Social Media Chair)

Please be sure to join our private Facebook group, HCFCCA Providers. Click on this link to get to our Facebook page, [HCFCCA Providers | Facebook](#).

Maryland State Department of Education (MSDE)

Division of Early Childhood		
Steven R. Hicks	Assistant State Superintendent	410-767-0335
Sharon Brooks	Executive Associate	410-767-0335
Vacant	Legislative Liaison/Program Developer	410-767-6786
Kenneth Blackman	Research Statistician	410-767-0583
Donna Pennewill	Fiscal Service Officer	410-767-0814
Eunice Lee	Fiscal Service Administrator	410-767-0339
Danella Scruggs	Agency Grants Specialist	410-767-7824
Kim Stewart	Agency Grants Specialist	410-767-7802
Alberta Stokes	Early Childhood Systems Specialist	410-767-0112
Alexis Washington	Communications and Outreach Specialist	410-767-7115
James McMahan	Specialist, ECCATS	410-767-6922
Rachel Demma	Director, Early Childhood System Development	410-767-0339
Office of Child Care		
Jennifer Nizer	Director, Office of Child Care	410-767-7823
Tara Bartosz	Assistant - Director of the Office of Child Care	410-767-7823
Early Learning Branch		
Judy Walker	Branch Chief	410-767-6549
Zina Spriggs	Administrative Aide	410-767-7798
Erika Anderson	Specialist, Early Learning	410-767-0646
Roslyn Coleman	Specialist, Early Learning	410-767-4441
Donald Corbin	Specialist, Early Learning	410-767-0240
Susan Harman	Specialist, Early Learning	410-767-0428
Charlie Mitchell	Specialist, Early Learning	410-767-0586
Nykia Washington	Specialist, Early Learning	410-767-0088
Vacancy	Specialist, Early Learning	410-767-7811
Licensing Branch		
Loais Valenti	Branch Chief	410-767-7128
Jaqueline Blanding	Administrative Aide	410-767-7128
David Hamauer	Criminal Background Investigations	410-767-0721
Teresa Lewis	Licensing Systems Project and Systems	410-767-7037
Manjula Paul	Nurse Consultant	410-767-1853
Child Care Scholarship Branch		
Rene Williams	Branch Chief	410-767-0140
Stephen Lenzner	Administrative Support	410-767-0578
Olivier Bithari	Quality Assurance Auditor	410-767-9655
Robyn Cobb-Randall	Policy Specialist	410-767-0649
Raye Dugger	Quality Assurance Specialist	410-767-7840
Lorena Guido	Quality Assurance Auditor	410-767-7811
John Lamb	Assistant Branch Chief	410-767-7831
Beverly Olivierre	Quality Assurance Manager	410-767-9654
Janielle Shorts	Monitoring Specialist	410-767-7832
Christopher Viamonte	Administrator	301-502-2999
POC HELPLINE		1-866-243-8796
Amber Green	Specialist, CCATS	410-767-8187
Eric Bundy	Specialist, CCATS	410-767-0440
Morgane Cole	Specialist, CCATS	410-767-9684
Allen Ward	Specialist, CCATS	410-767-0451
DeMoyne White	Specialist, CCATS	410-767-5964

Frederick County Office of Child Care (Region XII)		
5303 Spectrum Drive, Suite G Frederick, Maryland 21703 Janet Speak	Regional Manager	301-696-9766
Garrett County Field Office		
430 Weber Rd, Suite B Oakland, Maryland 21550 Dawna Rodeheaver	Lead Licensing Specialist	301-334-3426
Howard County Office of Child Care (Region VI)		
3300 North Ridge Road, Suite 190 Ellicott City, Maryland 21043 Sharon Afework Michelle Royal	Regional Manager Office Secretary	410-750-8770
Lower Shore Office of Child Care (Region IX)		
201 Baptist Street Suite 32, Multi-Service Bldg., 2nd Fl. Salisbury, Maryland 21801 Suzanne Roark Angela L. Bell	Regional Manager Office Secretary	410-713-3430
Montgomery County Office of Child Care (Region V)		
51 Monroe Street, Suite 200 Rockville, Maryland 20850 Carl Eggleston Latonya Jones	Regional Manager Office Secretary	240-314-1400
North Central Office of Child Care (Region XI)		
3105 1A/B Emmorton Road Abingdon, Maryland 21009 Beth O'Connor Alexandria Fortune	Regional Manager Office Secretary	410-569-2879
Prince George's County Office of Child Care (Region IV)		
807 Brightseat Road Landover, Maryland 20785 Danita Moore Kimberly Chambers	Regional Manager Office Secretary	301-333-6940
Southern Maryland Office of Child Care (Region X)		
41670 Courthouse Drive, P.O. Box 1709 Leonardtown, Maryland 20650 Susan Copsey Cathy Clements	Regional Manager Office Secretary	301-475-3770 800-874-6797
Upper Shore Office of Child Care (Region VIII)		
301 Bay Street, Suite 305 Easton, Maryland 21601 Sandy Kepler-Klunk	Regional Manager	410-819-5801

Collaboration and Program Improvement Branch		
Cynthia LaMarca Lessner	Branch Chief	410-767-0337
Levette Woodrum	Administrative Support	410-767-0583
Amy Beal	Judy Center Partnership	410-767-0675
Vacancy	Specialist Judy Center	410-767-7802
Wendy Dantzer	Program Coordinator	410-767-8959
Tresa Hanna	Grants Specialist	410-767-3396
Malkia McCleed	Communications Specialist	410-767-0602
Credentialing Branch		
Angeline Bishop-Oshoko	Branch Chief	410-767-6916
Adele Beulefeld	Administrative Officer	410-767-7805
Nancy Cahlink-Seidler	Training Approval Coordinator	410-767-7852
Deborah Langer	Training Specialist	410-767-7813
LaTanya Taylor	Credentialing Specialist	410-767-6947
Jacqueline Woodruff	Grants Specialist	410-767-8961
Agneatha Wright	Deputy Branch Chief	410-767-6923
EXCELS		
Lindi Budd	Branch Chief	410-767-7845
Vacancy	Administrative Aide	410-767-1664
Vacancy	Quality Assurance Coordinator	410-767-8961
Michelle Young	Community Outreach Specialist	410-767-7814
Jena Smith	Quality Assurance Manager	410-767-0580
Andrea Zabel	Quality Measurement Specialist	410-767-7863
Allegany County Field Office		
3 Pershing Street Cumberland, Maryland 21502 Ruth Lafferty	Lead Licensing Specialist	301-777-2385
Anne Arundel County Office of Child Care (Region I)		
49 Old Solomons Island Road Annapolis, Maryland 21401 Renee Woodard Tonya Smith	Regional Manager Office Secretary	410-573-9522
Baltimore City Office of Child Care (Region II)		
2700 North Charles Street, Suite 203 Baltimore, Maryland 21218 Sherry Tsigounis Kay Abrams	Regional Manager Office Secretary	410-554-8300
Baltimore County Office of Child Care (Region III)		
409 Washington Avenue, Suite LL8 Towson, Maryland 21204 Amber Riley Andrea Brown	Regional Manager Office Secretary	410-583-6200
Carroll County Office of Child Care (Region XIII)		
1643 Liberty Road, Suite 205 Eldersburg, Maryland 21784 Sharon Afework	Regional Manager	410-549-6489

Washington County Office of Child Care (Region VII)		
1075-C Sherman Avenue Hagerstown, Maryland 21740 Dolores Harmon Dee Myers	Regional Manager Office Secretary	301-791-4585

Contacting the Division Branches

Office of Child Care –
earlychildhood.msde@maryland.gov

Early Learning Branch
early.learningbranchesmsde@maryland.gov

Collaboration and Program Improvement Branch
– collaboration.programimprovement@maryland.gov

Licensing – licensingocc.msde@maryland.gov

Credentialing –
credentialocc.msde@maryland.gov or 1-866-243-8796

Subsidy – ccscentral@conduent.com or 1-866-243-8796

Maryland EXCELS – info@marylandexcels.org

Tuesday Tidbits-October 19, 2021



JOIN THE FOOD PROGRAM AND GET PAID TO SERVE NUTRITIOUS FOOD!

What is the Child and Adult Care Food Program (aka CACFP)?

- USDA CACFP is a federal program that reimburses family child care providers for serving nutritious meals and snacks to children.

Why join the Food Program?

- It's Free!
- All regulated FCC providers are eligible to join the CACFP.
- There are two main benefits:
 - Nutritional Benefits – You will receive the most up-to-date nutrition education based on USDA guidelines to help you plan and serve healthy meals and snacks to the children in your care.
 - Nutritious food contributes to the wellness and development of young children and teaches them healthy eating habits that last a lifetime!
 - Financial Benefits – Each month you will report, through KidKare (the free software we provide to our providers), the number of meals and snacks you serve. You will then receive a reimbursement to help you cover the costs of the food you served.
 - Providers receive reimbursement based on Tiering:
 - Tier 1 Rate – Higher rate of reimbursement if you live in a community that is economically in need and/or qualify by household income.
 - Tier 2 Rate – Lower rate – “All Other Providers”
 - If you serve one breakfast, lunch and a snack per day the average rate of reimbursement “per child” is:
 - Tier I (higher) - \$1,205 per year (20/21 Rate)
 - Tier II (lower) - \$577 per year (20/21 Rate)

NOTE: USDA Announced in April 2021 that because of the COVID 19 Pandemic a waiver has been put in place that allows all providers to receive the higher Tier 1 Rate of Reimbursement from JULY 1, 2021, through JUNE 30, 2022.

Is it financially beneficial for me to be on the program? What about taxes?

- Joining the food program makes financial sense. You are always financially better off on the Food Program.
 - Do you want to win the lottery?
 - If your spouse got a raise, would you accept it?
 - If your child care parents paid you more, do you want it?
 - The answer is “yes” to all the above. In each of these scenarios you earn more money, pay more in taxes, and have **MORE MONEY IN YOUR POCKET** after paying taxes.
 - **MORE INCOME IS ALWAYS BETTER!!!**
 - For every \$1000 you receive from the CACFP you can expect to keep about \$600-\$700 in your pocket after taxes.



Common Objections:

"It's too much paperwork" – Well we all know paperwork is no fun, BUT you are being paid to do the paperwork. The Planning Council pays for KidKare and offers it free to all providers. KidKare reduces your paperwork, and you can use your smartphone, iPad, laptop and/or computer to record your meals and attendance and use eForms to enroll your children, etc.

- If you spend 3 hours/week doing paperwork and care for 4 children, serve breakfast, lunch, and a snack = 156 hours/year
- Tier 1 – $\$1205 \times 4 = 4820 \div$ by 156 hours = $\$30.89$ per hour
- Tier 2 – $\$577 \times 4 = 2308 \div$ 156 hours = $\$14.79$ per hour

"I only qualify for Tier 2 Rate and the CACFP reimbursements don't cover the cost of my food."

- Some money is always better than no money.
- If you got \$1000 from the CACFP and your food costs were \$2500
 - Why give up \$1000 in income?
 - If you do not take the \$1000 income from the CACFP your food costs will not change.

"My enrollment is low; I'm Tier 2 and I only serve one (1) snack. It's not worth it to claim a 21-cent snack."

- Well, actually "NO" that is inaccurate.
 - You will earn approximately \$10.06 per hour by claiming a 21-cent snack.
 - 1 child x $\$.21 \times$ 5 days a week x 52 weeks = $\$54.60$ a year
 - 4 children x $\$.21 \times$ 5 days a week x 52 = 218.40 a year
 - 5 minutes a day to enter it into KidKare = 21.7 hours a year
 - $\$218.40 \div$ 21.7 hours = $\$10.06$ per hour for your CACFP hours.

"I will lose my food deductions if I join the CACFP so I will be worse off financially."

- Nope! This is a common misunderstanding.
- You are entitled to claim food expenses in the same way whether you are on the CACFP or not.
- You can deduct the meals/snacks you get reimbursed for by the CACFP.

JOIN Now! *There really aren't any serious objections to joining the CACFP. It's a wonderful nutrition program that will help keep the children in your care healthy and it's a significant financial benefit that will put cash in your pocket.*

TO GET STARTED CALL THE PLANNING COUNCIL @ 1-800-477-3993, ext. 3025 or 410-967-5848





Contents

IDAHO CACFP
MENU
TOOLKIT

INTRODUCTION Introduction to the toolkit and best practices	3	STRATEGIES Successful meal planning strategies	5	RESOURCES Presentations and other training to help you meal plan	9
MEALS 7 week menu cycles	11	RECIPES Over 60 recipes to choose from	19		

[CLICK THIS BUTTON TO CONNECT TO THE WEBSITE WITH THE MENU TOOLKIT](#)

CRAFT AND ACTIVITY



TOILET PAPER ROLL BUTTERFLY

Submitted by Zeeba Zaman to HCFCCA NEWSLETTER VOL 42 ISSUE 4
NOVEMBER 2021

Material: toilet paper roll , googly eyes, colored buttons,
card stock , acrylic
paint , pipe cleaners, small pompoms , black sharpie, wing
template

Instructions:

1. Paint a paper roll a color of your choice.
2. We will be making wings by folding a piece of cardstock in half
3. Trace a wing template
4. You will need to cut out the wings
5. Select the colored buttons of your choice
6. Glue them on the wing cut outs.
7. You could also take the pompoms and glue them on the wings
8. Decorate the wings however you like with different materials
9. You will make antennas next, bend the pipe cleaner into the shape of a “V”.
10. Glue the antenna to the paper towel roll
11. Glue googly eyes onto paper towel roll
12. Draw your mouth with any black marker
13. Glue the wings to the back of the paper towel roll

This is a great activity to keep children engaged. It helps with fine motor skills and allows children to imagine and explore their creative sides. It also allows children to be comfortable expressing and sharing ideas.

Reference: thebestideasforkids.com

submitted by Rhonda Watson, originally printed by CACFP

NOVEMBER



Learn with Me Just Breathe

Even our youngest need help calming down and regulating their emotions. Music, outside time, writing/drawing, and reading are all good ways to help. Try this exercise with the children in your care to teach Belly Breathing. Remember to practice when they are already calm.

Have children lay on their backs with their eyes closed. Place one hand on their chest and the other on their stomach. Inhale through the nose and into their abdomen. The hand on the stomach should rise and the hand on the chest should stay still. Inhale for 4 counts, hold the breath for 4 counts and then breathe out. The hand on the stomach should move down with the exhale. They should continue until they feel relaxed. You can tell them this is like smelling the flowers and anytime needed, use that as the vocal cue.



Create with Me Painting Pumpkins

Pumpkins do not always have to be carved to create the jack-o-lanterns. Get out craft supplies and paint and let the children decorate their pumpkins to create a wonderful fall decoration. Make sure to wash the pumpkin well beforehand and use non-toxic paint to cook with afterward.



Play with Me Over and Under Pumpkins

This is a great game to play before painting pumpkins. Ask the children to form two even lines and give each line leader a small pumpkin. When you say go, the line will first pass the pumpkin over their heads to get from the front to the back of the line. Then they'll pass the pumpkin through their legs from the back of the line to the front of the line. The first team to do both wins the race.



Read with Me

The fall is such a fun time of year for children. Add these two selections to your fall reading time.

From Seed to Pumpkin by Wendy Pfeffer
Pumpkin Pumpkin by Joanne Tisherington



Cook with Me Potatoes & Pumpkins

- Potatoes
- Pumpkin, canned

Wash, peel, quarter, and boil potatoes. When soft when tested with a fork, remove from heat and drain. Using a mixer, mash potatoes and add in the canned pumpkin for a new fall flavor.

Name _____

Rhyming Pumpkins

Match the letter in the pumpkin to the first letter of the rhyming sight words.



Hat



Sat



Rat



Cat



Pat

RECIPES

HCFCCA FUNDRAISERS

HCFCCA Shaklee Fundraiser



Every day, kids are off to use their powers for good. But it can be a challenge to ensure they're getting the nutrition they need from diet alone. That's where Shaklee comes in. [Meology™ Kids](#), and [Incredivites®](#) are made with super-safe ingredients that bring out the best in your li'l superhero.

Meology Kids—A Groundbreaking Innovation Delivering:

Superior nutrition

Meology for your mini-me. These customizable daily packs of gummy vitamins contain a powerful combination of nutrients to help kids grow up well.*

- 11 Essential vitamins and minerals to support kids as they grow & develop
- 300 mg of vital omega-3s to support brain and eye health
- A powerful combination of immune-supporting nutrients
- 3 delicious flavors: Cheery Cherry, Very Berry, and Strawberry Lemonade

Just the Good Stuff

- With only 3 g of sugar (which is equivalent to 3 strawberries), Meology Kids contains 1/3 less sugar compared to other popular brands.
Dairy/lactose free, gluten/wheat free, soy free, egg free, peanut free, tree nut free, GMO free, and shellfish free

Convenience

- A proprietary, all-in-one, designable vitamin gummy packs that save parents' time and eliminates

guesswork. Say “bye” to opening multiple bottles.

Personalization

- Design each pack with your kiddo’s name (or nickname) and a personal icon of their choice!

And, for every purchase of Meology Kids, Shaklee helps provide life-changing nutritional support to a child in need through our partnership with Vitamin Angels. Get started by [customizing Meology Kids packs](#) for all your little ones.

Incredivites—Multivitamin for Kids

Each serving of Incredivites features 100% of the Daily Value of all eight B vitamins, as well as vitamins C and E, which play crucial roles in supporting immune function and more.*

- Loaded with 23 essential vitamins and minerals for healthy development*
- Provides calcium and vitamin D, which are crucial bone-building nutrients*
- All-natural tropical punch, grape, and berry flavors
- Free of artificial sweeteners, colors, preservatives, and flavors
- Gluten and lactose free
- Naturally sweetened with xylitol, which does not promote tooth decay

HCFCCA Shaklee Fundraiser

STEP 3: Kill Germs & Viruses

**BASIC-G® GERMICIDE
+ SPRAY BOTTLE**

- Powerful multipurpose germicide to disinfect, clean, and deodorize.
- Effective against 30 types of bacteria and 26 types of viruses, including human coronavirus. #2

**TOUGH ON GERMS & VIRUSES
INCLUDING HUMAN
CORONAVIRUS (COVID-19)†**



HCFCCA ADVERTISING

HCFCCA does not endorse any specific product, service, organization, company, information provider, or content. The advertisements are for information and convenience of its readers and do not constitute endorsement, recommendation, or favoring by HCFCCA. The use of any advertised products or services is at the sole discretion of the user.

HCFCCA PROVIDER INFORMATION

A WEBINAR SERIES: MARYLAND STATE PRE-K PROGRAM

Session 1-October 14, 2021

What is Maryland State PreK?

This session will provide an overview of the structural elements of a high-quality PreK program. We will discuss program structure, developmentally appropriate environments, the importance of early learning standards, intentional lesson planning, highly qualified teaching staff, focused and intentional professional learning opportunities that support program goals and school readiness, evidence-based curriculum, the curriculum-instruction-assessment cycle, instructional support, and inclusive practices.

Session 2-November 9, 2021

What's in the Application?

This session will outline the requirements of the program, break down the application by sections, provide clarification on each section, and introduce the types of questions found in the application and the language used in the application.

Session 3-December 9, 2021
Now You're Ready to Apply...

This session will provide an overview of the application scoring rubric, common mistakes, and strategies to prepare for submitting the application. (Prior to attending this session, attendees will view the recording of "FY 22 PreK Technical Assistance Webinar.")

Registration: <https://forms.gle/kn8CB2fHdBv9LECS9>

*All sessions will be 1:00-2:30 pm

- [Learn more about the Maryland State PreK program! 10-1-21 \(2\).pdf](#)



Fall 2021 Professional Development Institute

Understanding Adverse Childhood Experiences (ACEs): The Behavioral Impact on Children and the Family-Based Provider

As family childcare provider, you are committed to the healthy growth and development of children in your care. However, your role extends far beyond that. You are also supporting children and families through very challenging and traumatic times. As a result, you are unintentionally exposed to non-tangible occupational hazards that weigh heavily on the mind, emotions and overtime begin to manifest physically if continuously dismissed. In this professional development institute, we will explore the social and neurobiological impact of ACEs and the mental and emotional costs of being a professional in early childhood education. Family Childcare Providers will leave with a deeper understanding of the impact of trauma and tools to build personal resilience and resilient children.

Saturday, November 20 • 8:30 A.M. to 1:30 P.M.

Howard County Office of Children and Families

Virtual Classroom through Webex

REGISTER ONLINE:

PDI Registration

*Funds from the Maryland State Department of Education State grant #222184 will be used in funding \$46 per person for this PDI.

Registration Deadline:

Friday, November 12

www.howardcountymd.gov/pdi

Questions?

Call Kaya Swann - 410.313.1453 or

E-mail: kswann@howardcountymd.gov

MSDE Approval Number:

Core of Knowledge: 2 CD 2 HSN

This event is not approved for a PAU in the Maryland
Credential Program

The Howard County Child Care Resource Center is a member of the Maryland Child Care Resource Network with funding provided from the Maryland State Department of Education, through Maryland Family Network, and Howard County Government.



If you need this publication in an alternate format or accommodations to attend, call 410-313-1340 (voice/relay).

Fall 2021 Family Provider Professional Development Institute

Saturday, November 20 • 8:30 AM - 1:30 PM

Register by Friday, November 12, 2021

8:30 AM Sign in • Troubleshooting • Welcome

9:00 AM Session 1: Exploring the Basic Foundation of ACES

10:30 AM Break

10:45 AM Session 2: Impact of Compassion Fatigue

12:00 PM Break

12:45 PM Session 3: Action Steps to Build Resilience

1:30 PM Closing





The Office of Children and Families is excited to offer a free, new opportunity for infant and toddler early care and education providers. You are invited to partner with us to address the social and emotional needs of children.

The primary goal of this program is to increase early care and education providers' capacity to address the **social and emotional needs of children age birth to three** by providing coaching, consultation and training services in infant and toddler classrooms.

We provide infant/toddler staff the opportunity to:

- set the stage to decrease negative behaviors in the classroom;
- develop innovative strategies to manage challenging behaviors;
- teach children new skills to replace challenging behaviors; and
- support each other in addressing difficult behaviors

A partnership with the PPO I/T program will **provide your infant/toddler teachers with a certified coach**, offering a one-on-one approach within each classroom, and access to free resources and materials. Your coach will model techniques, observe staff/child interactions, and provide hands-on strategies to equip teachers of young children with the tools and information to better regulate and more effectively address the developing emotions of those in their care.

For more information, or to participate,
contact the CAREline at

410-313-CARE (2273)

VOICE/RELAY

children@howardcountymd.gov • www.howardcountymd.gov/children



If you need this information in an alternative format, contact the Office of Children and Families at 410-313-1940 (voice/relay) or children@howardcountymd.gov.

Directory of NACES Members

If you have been referred to the NACES website for an evaluation of your non-US studies, please select a NACES member organization from the list below. This list provides links to each member's website – we recommend that you contact our members directly to obtain information about the services they offer, their fees, and their requirements.

Current Members

[AZZ Evaluations, LLC](#)
Member since May 2009

[Academic Evaluation Services, Inc.](#)
Member since May 2008

[Educational Credential Evaluators, Inc.](#)
Member since March 1987

[Educational Perspectives, LLC](#)
Member since April 2003

[Educational Records Evaluation Service, Inc.](#)
Member since April 1993

[Evaluation Service, Inc.](#)
Member since June 1991

[Foreign Academic Credential Service, Inc.](#)
Member since March 1987

[Foundation for International Services, Inc.](#)
Member since March 1987

[Global Credential Evaluators, Inc.](#)
Member since March 2004

[Global Services Associates, Inc.](#)
Member since May 2000

[International Academic Credential Evaluators, Inc.](#)
Member since May 2006

[International Education Evaluations, Inc.](#)
Member since May 2018

[International Education Research Foundation, Inc.](#)
Member since March 1987

[Center for Applied Research, Evaluation and Education, Inc.](#)
Member since March 1987

[Josef Slavik and Associates, Inc. International Education Consultants](#)
Member since April 1989

[Sloan, The Evaluation Company](#)
Member since April 1996

[Transcript Research](#)
Member since September 2011

[World Education Services, Inc.](#)
Member since March 1987

NATIONAL ASSOCIATION OF CREDENTIAL EVALUATION SERVICES, INC. <i>An Association of Independent Evaluation Services</i> <i>Revised 3/31/2011</i>	
Center for Applied Research Evaluation & Education P. O. Box 18358 Anaheim, CA 92817 Phone: 714-237-9272 www.iescareg.com	FACS, Inc. Foreign Academic Credentials Service, Inc. P.O. Box 400 Glen Carbon, IL 62034 Phone: 618-656-5291 www.facsusa.com
Educational Credential Evaluators, Inc. P.O. Box 514070 Milwaukee, WI 53203-3470 Phone: 414-289-3400 www.ecce.org	Foundation for International Service, Inc. 14926 35th Avenue West Suite 210 Lynnwood, WA 98097 Phone: 425-248-2255 www.fis-web.com
Education Evaluators International, Inc. 11 S. Angell Street #348 Providence, RI 02906 Phone: 401-521-5340 www.educei.com	International Consultants of Delaware, Inc. P. O. Box 8629 Philadelphia, PA 19101-8629 or 3600 Market Street, Suite 450 Phone: 215-222-8454 ext. 603 www.icdel.com
Educational Perspectives P.O. Box 618056 Chicago, IL 60661-8056 Phone: 312-421-9300 www.edperspective.org	International Education Research Foundation, Inc. P.O. Box 3665 Culver City, CA 90231-3665 Phone: 310-258-9451 www.ierf.org
Educational Records Evaluation Service, Inc. 601 University Avenue Suite 127 Sacramento, CA 95825 Phone: 916-921-0790 www.eres.com	Josef Silny & Associates, Inc. International Education Consultants 7101 SW 102 Avenue Miami, FL 33173 Phone: 305-273-1616 www.jsilny.com
Evaluation Service, Inc 333W. North Ave. #284 Chicago, IL 60610-1293 Phone: 847-477-8569 www.evaluationsservice.net	Span Tran Educational Services, Inc. 7211 Regency Square Blvd. Suite 205 Houston, TX 77036-3197 Phone: 713-266-8805 www.spantran-edu.org
Foreign Educational Document Service P.O. Box 4091 Stockton, CA 95024 Phone: 209-948-6589 www.documentsservice.org	World Education Services, Inc. Bowling Green Station P.O. Box 5087 New York, NY 10274-5087 Phone: 212-966-6311 www.wes.org

Please Note:

Credits from institutions in other countries shall be evaluated for comparability of degree and course work by an independent agency authorized to analyze foreign credentials. The agencies listed above are designated by the Department to provide this service. A course-by-course evaluation using original documents is required.



CONTACT US

Howard County Family Child Care Association
 HCFCCA
 P.O. Box 2154
 Columbia, MD 21045
 (301) 776-4841

You are a member of HCFCCA, this entitles you to our monthly newsletter.

[Unsubscribe](#)